

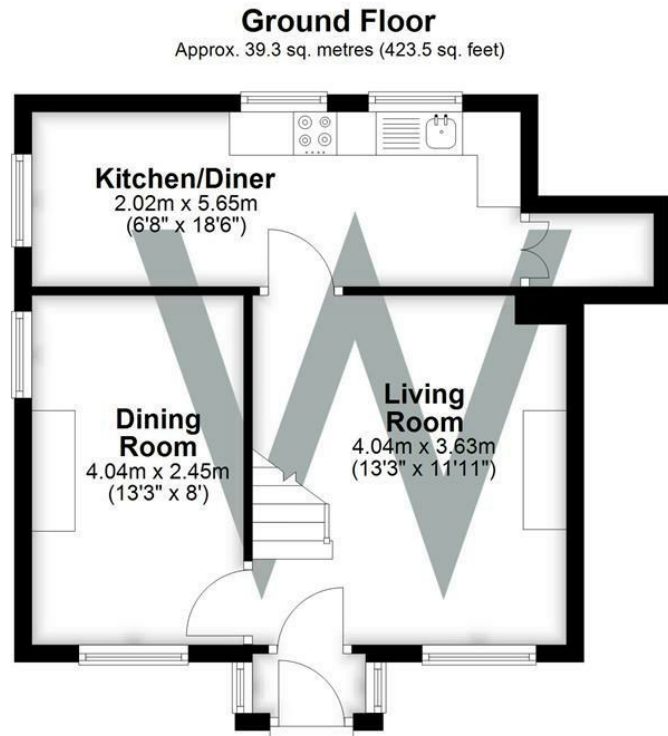


31 North Street, Wilton, Salisbury, Wiltshire, SP2 0HE

£975 PCM

This charming two-bedroom property in Wilton offers a spacious lounge, a modern kitchen/diner, two bedrooms, and is equipped with gas central heating and double glazing.

This well-presented two-bedroom property is located in the popular town of Wilton. The property consists of a spacious lounge with a decorative brick fireplace. Adjacent to the lounge is a second reception room that could also serve as an additional bedroom. Towards the rear of the ground floor, there is a large galley kitchen/diner equipped with an electric oven and space for a washing machine. The first floor includes the master bedroom and a modern family bathroom, while the second floor features the loft bedroom with a window overlooking the nearby park. The property has undergone full redecoration and has new carpets. It is equipped with gas central heating and double glazing throughout, and is offered UNFURNISHED.



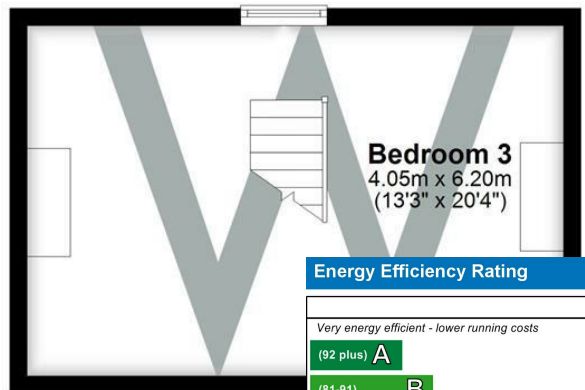
First Floor

Approx. 24.4 sq. metres (262.2 sq. feet)



Second Floor

Approx. 25.1 sq. metres (270.3 sq. feet)



Total area: approx. 88.8 sq. metres (955.9 sq. feet)

Energy Efficiency Rating		Current	Potential
Very energy efficient - lower running costs			
(92 plus)	A		
(81-91)	B		81
(69-80)	C		
(55-68)	D		
(39-54)	E	47	
(21-38)	F		
(1-20)	G		
Not energy efficient - higher running costs			
England & Wales		EU Directive 2002/91/EC	

WHITES
 Castle Chambers, 47 Castle Street,
 Salisbury, Wiltshire, SP1 3SP
 01722 336422
 www.hwwhite.co.uk
 residential-sales@hwwhite.co.uk

